

Human Claudin 18.2 Protein-VLP



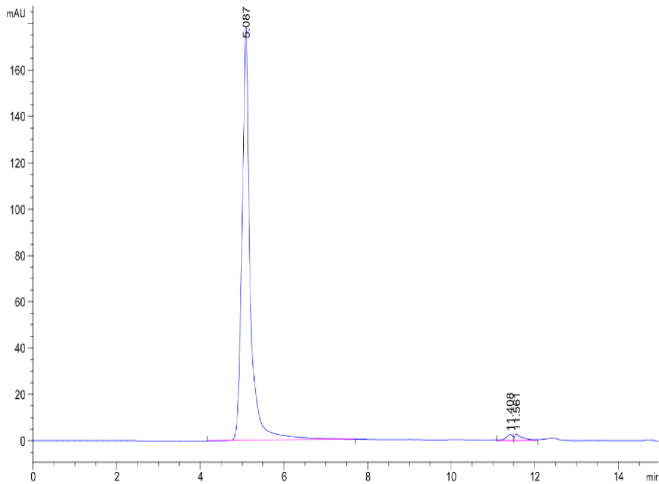
Cat. No. CLD-HM0P37

Description	
Source	Human Claudin 18.2 Protein-VLP is expressed from HEK293. It contains Met1-Val261 (It may have cross reaction with anti-His antibody).
Accession	P56856-2
Molecular Weight	The target protein has a predicted MW of 29 kDa.
Endotoxin	Less than 1 EU per µg by the LAL method.
Purity	> 95% as determined by HPLC

Formulation and Storage	
Formulation	Supplied as 0.22 µm filtered solution in PBS, 200mM L-Arginine (pH 7.4). Notice: If you need it for immunization, water-soluble adjuvant is recommended.
Storage	Valid for 12 months from date of receipt when stored at -80°C. Recommend to aliquot the protein into smaller quantities for optimal storage. Please minimize freeze-thaw cycles.

Background	
Claudin18 (CLDN18) belongs to the large claudin family of proteins, which form tight junction strands in epithelial cells. CLDN18 is specifically expressed in the stomach and lung. CLDN18 has two alternatively spliced variants, CLDN18.1 and CLDN18.2. Isoform 2 (Claudin 18.2) is abundant in gastric tumors.	

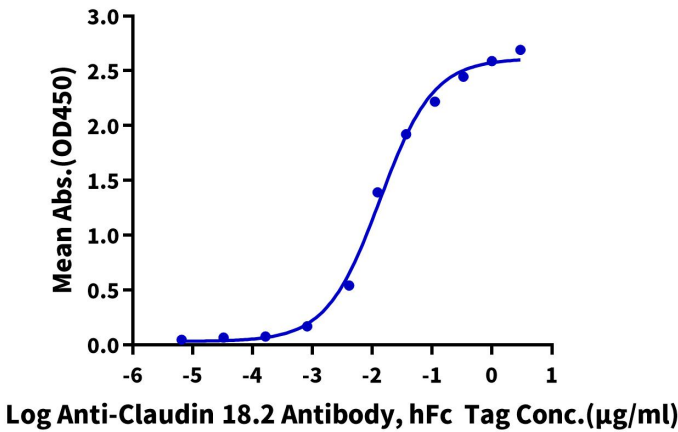
Assay Data	
SEC-HPLC	



The purity of Human Claudin 18.2 VLP is greater than 95% as determined by SEC-HPLC.

ELISA Data

**Human Claudin 18.2 VLP ELISA**  
0.5µg Human Claudin 18.2 VLP Per Well



Immobilized Human Claudin 18.2 VLP at 5µg/ml (100 µl/Well) on the plate. Dose response curve for Anti-Claudin 18.2 Antibody, hFc Tag with the EC50 of 9.8 ng/ml determined by ELISA (QC Test).